

**Baxter**

ICNET

CLINICAL SURVEILLANCE SOFTWARE

HOSPITAL SUITE

## OUTBREAK MANAGER

Tackling the complex challenges of managing infectious disease outbreaks in healthcare facilities



Infectious disease outbreaks within healthcare facilities are detrimental to patient outcomes, clinical staff and hospital resources. Outbreaks contribute to patient morbidity, leading to extended lengths of stay and additional treatment-related costs. Clinic productivity and profitability may also be reduced due to negative operational impacts, such as ward closures and infected staff members.<sup>1</sup>

The emergence of new infectious diseases and the rise of antimicrobial resistance make controlling the spread of infectious disease increasingly complex. Infection prevention professionals experience challenges in preventing, controlling, and contending with outbreaks and face workload challenges, time pressures and psychological effects stemming from outbreaks.<sup>2</sup>

The application of new technologies is helping infection prevention professionals understand more about outbreaks, including the detection of more complex, long-term outbreaks. **ICNET** Outbreak Manager provides access to the latest data analysis and visualisation technologies to provide actionable insight into this evolving field.

**£107.6M**

**ANNUAL COST**

of Norovirus  
to NHS<sup>3</sup>



## MORE EFFICIENT, MORE EFFECTIVE OUTBREAK MANAGEMENT

**ICNET** Outbreak Manager helps infection prevention professionals more efficiently tackle the complex challenges of managing infectious disease outbreaks. Our robust data collection, visualisation and analysis tools are designed to facilitate investigation, management and reporting activities to help streamline and strengthen outbreak management workflows within the hospital environment.

**COLLECT:** Rich data collection in an integrated environment ensures a complete and accurate picture of an outbreak or multiple outbreaks.

- Allows all sources of infection within a facility to be documented
- Case definitions ensure a consistent approach to patient inclusion
- Supports management of multiple, concurrent active outbreaks
- Use for outbreaks involving humans, animals and/or environmental reservoirs

**INVESTIGATE & TRACK:** Robust visualisation tools bring transparency and accessibility to available data — helping to quickly identify patterns and relationships within outbreaks, saving investigative effort and driving timely action. Users can also track and share progress towards defined goals.

- **EPIDEMIOLOGICAL CURVE** illustrates the course and type of outbreak, informing teams about mode of transmission, outbreak status, and impact of intervention.
- **NETWORK DIAGRAM** visually tracks chains of transmission between people, animals and objects over time, helping users to:
  - Understand potentially large and complex network of interrelated individuals
  - Identify index patients and super spreaders
  - Focus control measures where most critical
- **SYMPTOM TRACKING** allows teams to monitor and record patient symptoms on a daily basis, giving a clear picture of ward status to help manage the outbreak and determine when patients can be moved.
- **DASHBOARD** provides a snapshot of most important information, allowing users to quickly understand current status of an outbreak.

**COORDINATE:** Comprehensive outbreak and case management functionality helps IPC teams coordinate intervention activities with built-in tools to help analyse interventional needs and allocate resources accordingly.

- Suitable for outbreaks across a single ward, multiple wards or multiple healthcare facilities
- Ability to link multiple outbreaks for shared data sets and reporting, for an integrated approach to disease management
- Outbreak distribution map helps identify overall resource utilisation and where resources are most needed

**PREVENT:** Timely identification of threats and trends helps drive proactive intervention to avoid further spread of infection.

- Contact Tracing helps identify additional patients at risk based on proximity to patient of interest
- In-system, email and SMS alert functionality to reach users in any setting

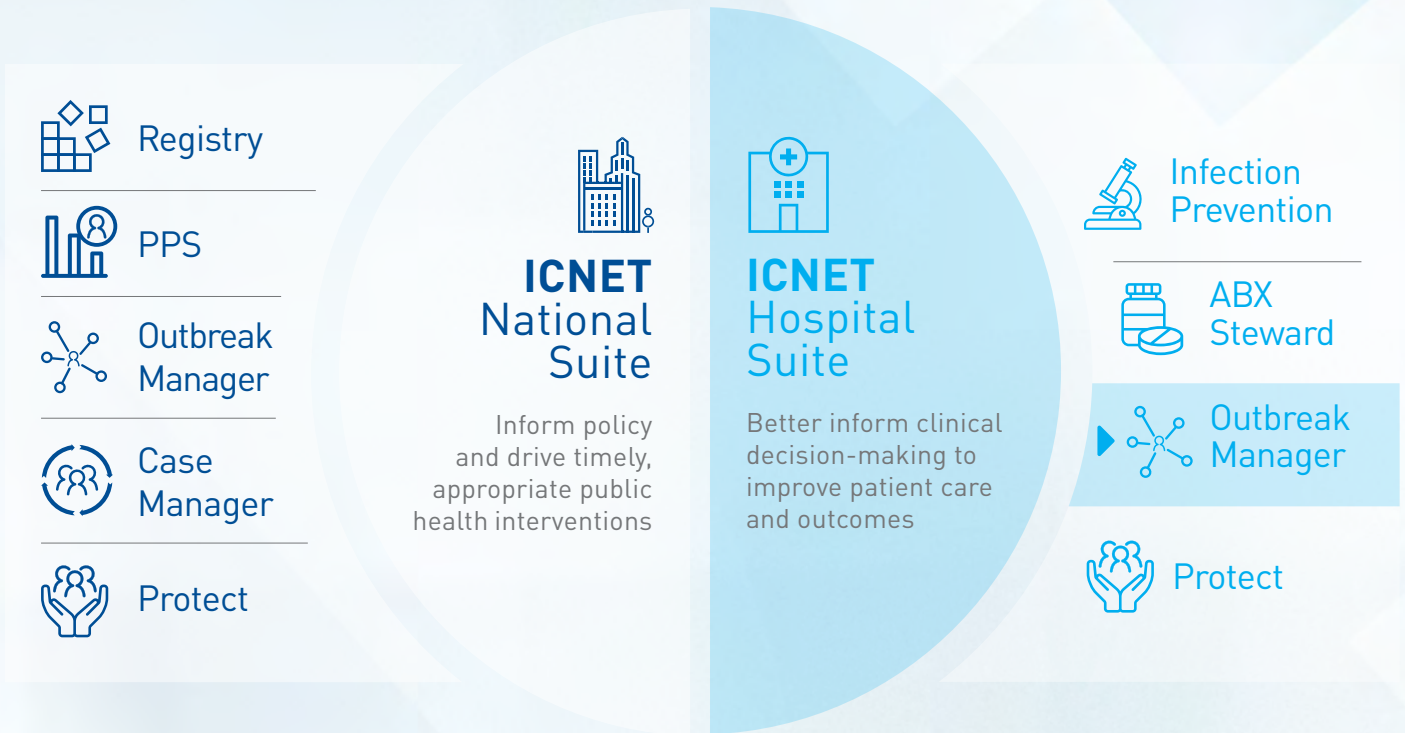


## MORE CLINICAL EXPERIENCE

**ICNET** represents nearly 20 years of expertise in clinical surveillance software, and Outbreak Manager continues this tradition of clinical rigor and excellence. The newest component of our clinical surveillance platform was developed in partnership with Public Health Wales in support of NHS key strategic drivers, and aligns with effectiveness standards for the NICE Evidence Standards Framework for Digital Health Technologies.

**ICNET** software is now in use in more than 40% of NHS Trusts and Health Boards in the UK.<sup>4</sup> Globally, we partner with more than 1,200 facilities.<sup>4</sup>

# ICNET CLINICAL SURVEILLANCE PLATFORM



## A **MORE** Integrated Approach to a Complex Challenge

**ICNET** is the only platform to provide a seamless solution across the hospital and public health settings, ensuring **MORE** people are protected.

**ICNET** Hospital Suite supports infection prevention professionals within the healthcare facility setting, while **ICNET** National Suite supports public health communicable disease professionals at the mass population level. Together they support a holistic approach to clinical surveillance, outbreak management and antimicrobial stewardship, with customisability to meet the specific needs of your organisation.

**Effective clinical surveillance has been shown to improve health outcomes by providing early warnings of emerging threats and data to identify and act on long-term trends.<sup>5</sup>**

**Visit [ICNETsoftware.com](https://www.icnetsoftware.com) to request a demo.**

1. Sadique Z, Lopman B, Cooper BS, Edmunds WJ. Cost-effectiveness of ward closure to control outbreaks of norovirus infection in United Kingdom National Health Service Hospitals. *J Infect Dis.* 2016;213:S19-26. 2. Musau J, Baumann A, Kolotylo C, O'Shea T, Bialachowski A. Infectious disease outbreaks and increased complexity of care. *Int Nurs Rev.* 2015;62:404-11. 3. Sandmann FG, Shallcross L, Adams N, et al. Estimating the hospital burden of norovirus-associated gastroenteritis in England and its opportunity costs for nonadmitted patients. *Clin Infect Dis.* 2018;67:693-700. 4. Data on file. Baxter International, 2019. 5. Review on Antimicrobial Resistance. Tackling drug-resistant infections globally: final report and recommendations. May 2016.

Baxter and ICNET are trademarks of Baxter International Inc. Any other trademarks, product brands, or images appearing herein are the property of their respective owners.